

100 Eclipse Road
Cary, NC 27511

1-866-235-7730

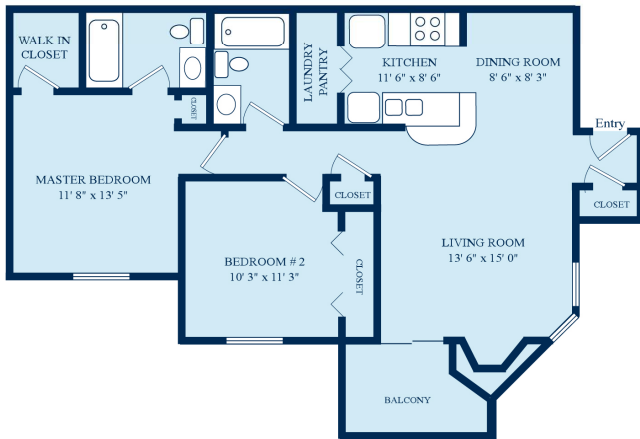
amberwood@michelsonrealty.com

www.amberwoodapts.com

THE Magnolia

Two Bedroom, 2 Bath
Approximately 960 Square Feet

*Suites may vary in features and dimensions based on floor and location.

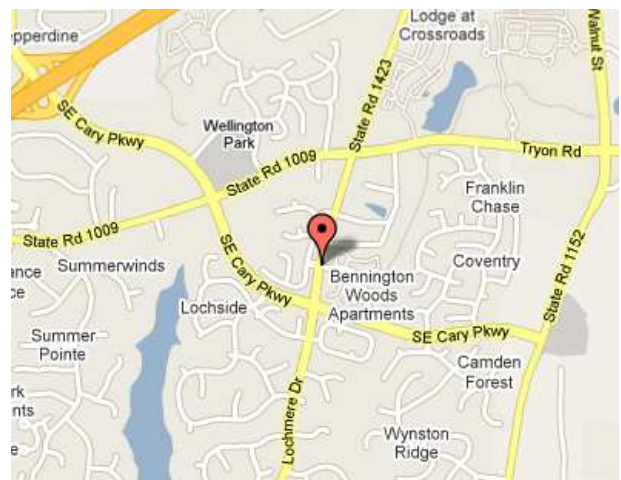


Available Apartment Amenities

- Spacious Walk-in Closets
- Private Balconies and Patios
- Ceiling Fans
- Cozy Wood Burning Fireplaces
- Frost-Free Refrigerator
- Continuous Clean Ovens
- Garbage Disposals
- Dish Washers
- Crown Molding
- Brass Nickel Fixtures
- Granite Counter Tops

Directions

Take 40 East to US1/64 south (exit 293). Take Cary Parkway exit. Turn left onto Cary Parkway. Go to the traffic light and turn left onto Lochmere Dr. Amberwood is the first street on the right.



Office Hours

Monday: Friday 9am – 6pm
Saturday: 10am – 5pm
Sunday: 1pm – 5pm

